

Drawer Options



Side drawers



Continental and Side Drawers



End Drawer

Zip and Link



Zip and Link facility available on all double sizes

Hypnos have a large showroom at their factory in Princes Risborough, Buckinghamshire, where you can see and try the full range of beds. Expert advice is on hand to help you make an informed decision at your leisure over a pleasant cup of tea or coffee. Sales are then arranged through your own choice of Hypnos Stockist.

Opening hours
9am - 5pm Monday to Friday
9am - 1pm Saturdays
(except Holiday weekends)

Every effort has been made to reproduce beds and furniture accurately. However, the effect of different lighting and the limitations of the printing process may result in some colour differences. We reserve the right to modify designs, sizes and specifications without prior notice.

© Hypnos Limited 2003.



Eminence

Elegantly covered in the finest gold and silver damask, the deep luxurious mattress encloses the very best of trusted traditional fillings including pure silk and cashmere.

- 2,088 pocket springs in 150cm
- Double layer of springs for extra comfort and flexibility
- 3-row hand side-stitched borders for extra strength
- Fillings: Cotton felt with hand teased white hair, cashmere, silk, lambswool
- Traditionally hand tufted with woollen tufts
- Regular mattress gauge options
- Sprung-edge divan base with valance



Empress

A regal bed that promises years and years of peaceful sleep and deep relaxation. The golden thread spun into the rich ivory damask conceals beneath a multitude of natural fillings.

- 1,800 pocket springs in 150cm
- 3-row hand side-stitched borders for extra strength
- Fillings: Cotton felt with hand teased white hair, cashmere, silk, lambswool
- Traditionally hand tufted with woollen tufts
- Firm and regular mattress gauge options
- Sprung-edge divan base with valance



Sovereign

The hidden comfort under the silver damask is a secret just waiting to be discovered! Sweet dreams and blissful sleep accompany the Sovereign.

- 1,634 pocket springs in 150cm
- 3-row hand side-stitched borders for extra strength
- Fillings: Cotton felt with hand teased white hair, cashmere, silk, lambswool
- Traditionally hand tufted with woollen tufts
- Firm and regular mattress gauge options
- Sprung-edge divan base with valance

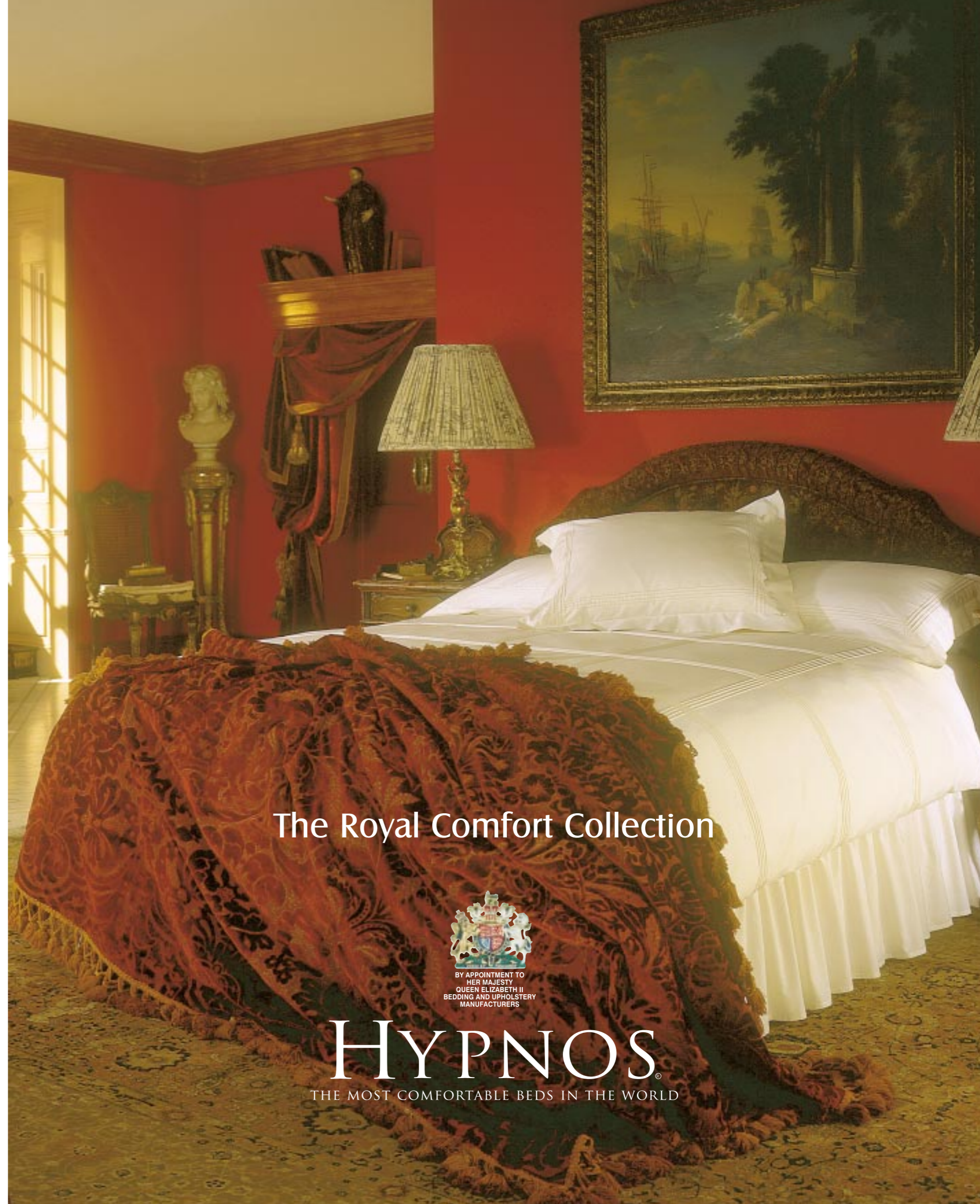


When drawers are specified this precludes the use of a valance.

Hypnos Limited, Princes Risborough, Buckinghamshire HP27 9DN, England

Telephone: 01844 348200 • Facsimile: 01844 346112

E-mail: info@hypnosbeds.com Web: www.hypnosbeds.com



The Royal Comfort Collection



BY APPOINTMENT TO
HER MAJESTY
QUEEN ELIZABETH II
BEDDING AND UPHOLSTERY
MANUFACTURERS

HYPNOS

THE MOST COMFORTABLE BEDS IN THE WORLD



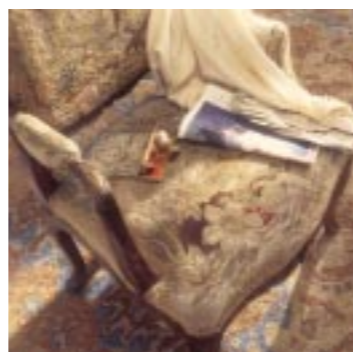
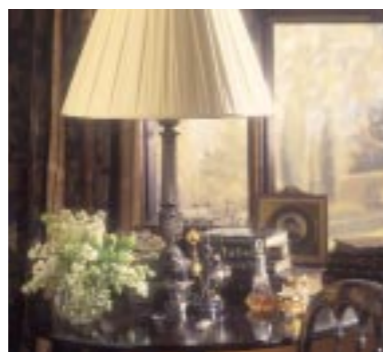
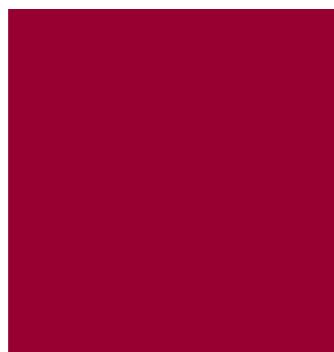
Royal Comfort Collection

Taking the very best of natural materials, each Royal Comfort bed is traditionally made by hand, using layers of wool, silk, cashmere and cotton. The deep pocket-spring mattresses are covered in finely woven damask fabrics and teamed with a matching sprung base, giving you perfect sleep, with beds that are not only really comfortable but also totally supportive.

Every step in the process of making these luxury beds, has been perfected and improved over the years and Royal Comfort is the very finest of the Hypnos marque, the epitome of the craftman's skills and absolute luxury.

What could be better than to retire to your bedroom at the end of a busy day and find the perfect place to relax in the comfort of your bed, at a time of quiet meditation, as you drift slowly into a deep relaxing sleep, knowing that you will be revitalised and refreshed when you awake in the morning!

"Sleep - the restorer of the soul, the life-giver and reviver."



Model shown: Eminence bed set
180cm x 200cm mattress on a sprung edge divan with a pleated valance
Headboard: Monet (HB39)
Cover: Windsor Platinum